

ECLIPSE
PROFESSIONAL TOOLS

TradeZone
New Zealand

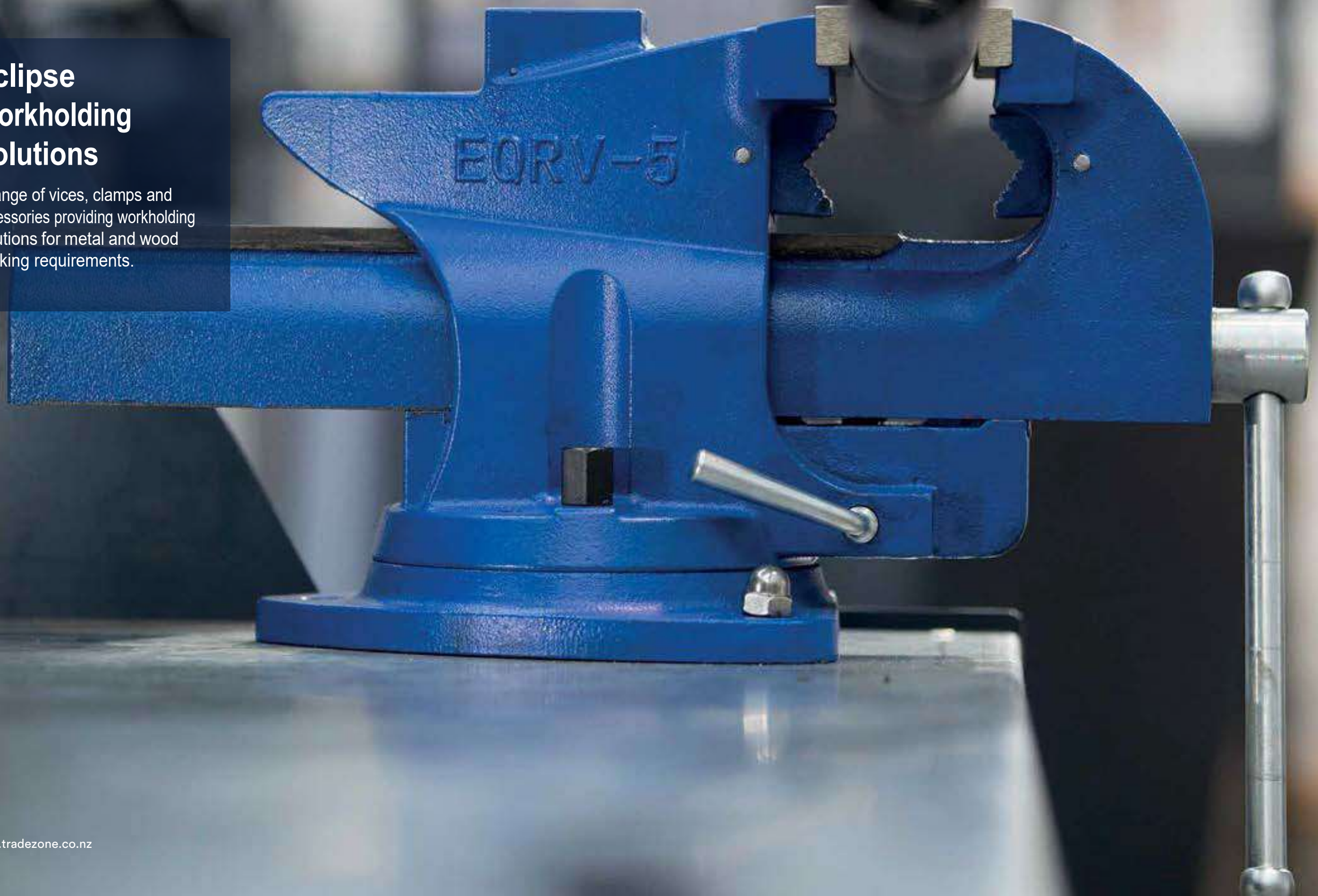


Machinery Workshop Hand Tools
THE TOOLS TO TRUST



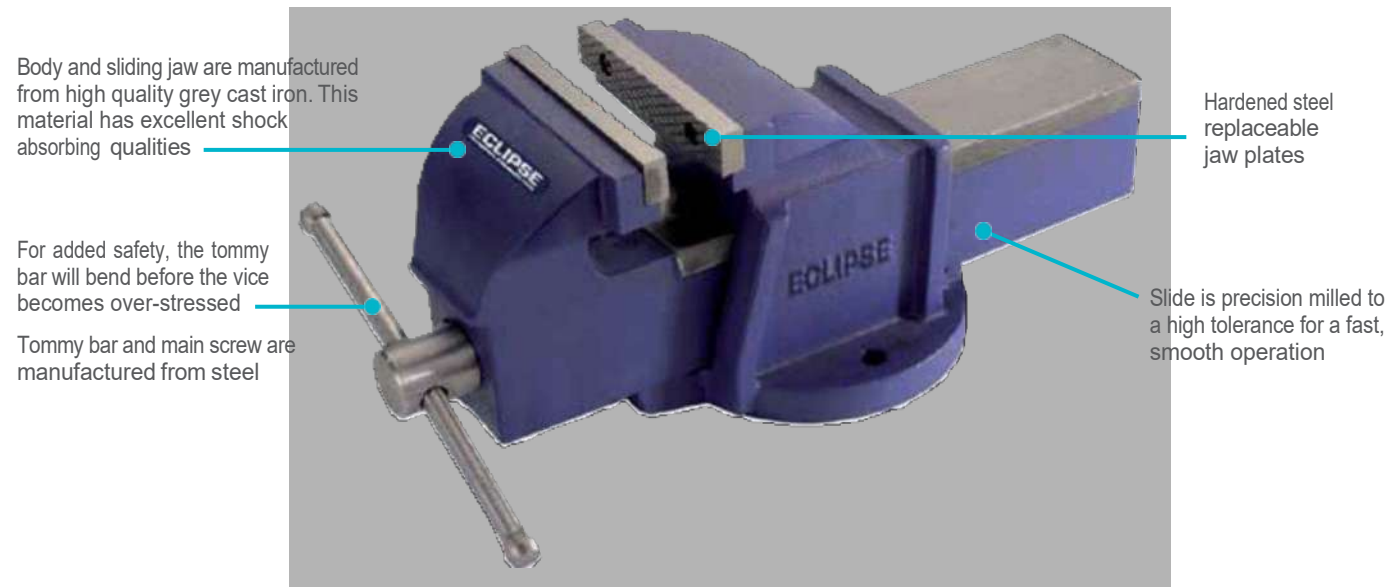
Eclipse Workholding Solutions

A range of vices, clamps and accessories providing workholding solutions for metal and wood working requirements.



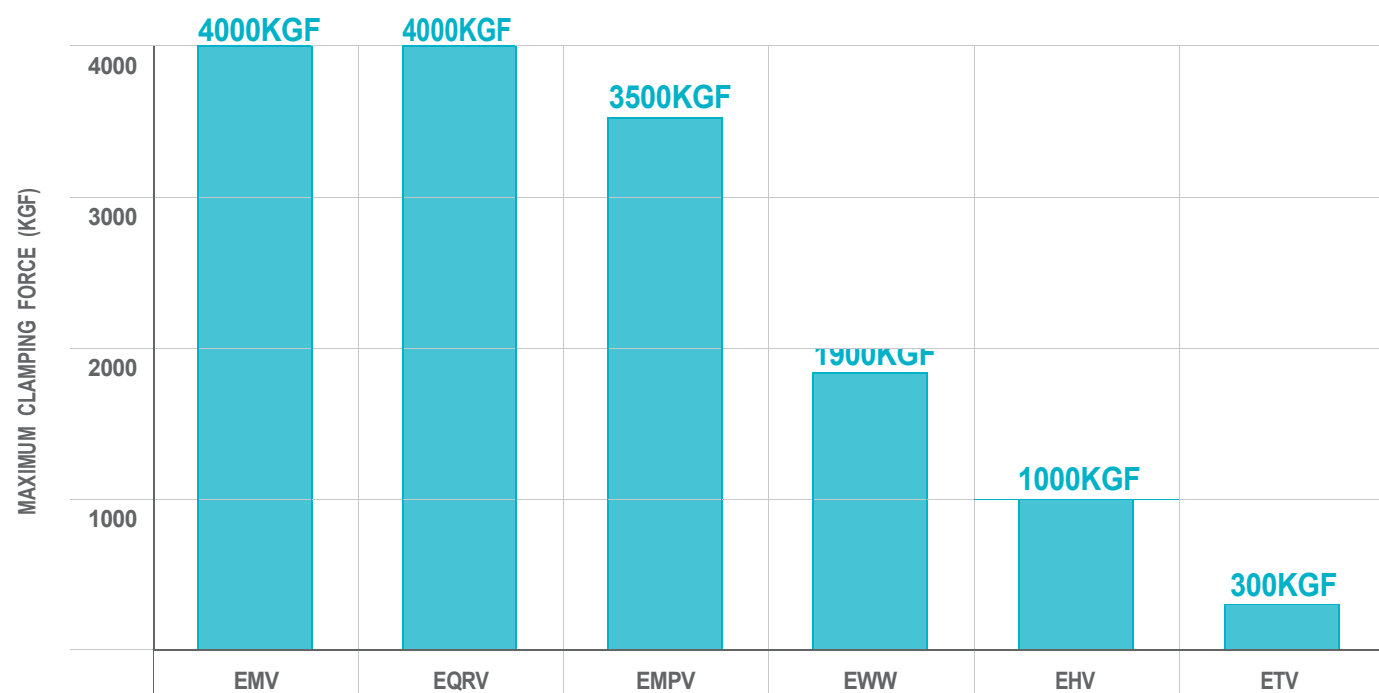
EMV Mechanics' Vices

High quality cast iron Vices capable of generating up to 4000 Kgf clamping force for general metal working applications.



Part No.	Jaw Width	Throat Depth	Opening	Clamping Force (Max)	Net Weight	Qty per Pallet
EMV-1	75mm (3")	48mm	82mm	1500kgf	4.8kg	144
EMV-3	100mm (4")	63mm	109mm	2000kgf	9.3kg	90
EMV-5	125mm (5")	73mm	136mm	2500kgf	15.8kg	40
EMV-6	150mm (6")	86mm	168mm	3000kgf	24.2kg	36
EMV-8	200mm (8")	103mm	208mm	4000kgf	38.1kg	24

Vices - Maximum Clamping Forces



EMVSB Swivel Bases

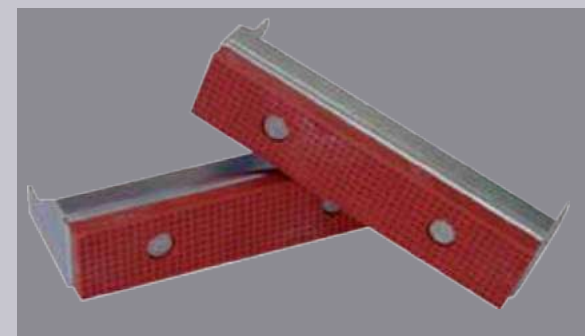
- Includes three mount holes for attaching to a workbench
- For use with Eclipse Mechanics' Vices



Part No.	Size	For use with:	Pack Qty
EMVSB-1	Swivel Base for 75mm (3") Vice	EMV-1	10
EMVSB-3	Swivel Base for 100mm (4") Vice	EMV-3	10
EMVSB-5	Swivel Base for 128mm (5") Vice	EMV-5	10
EMVSB-6	Swivel Base for 150mm (6") Vice	EMV-6	8
EMVSB-8	Swivel Base for 200mm (8") Vice	EMV-8	8

EFG Fibre Grips

- A range of high quality fibre grips for use with Eclipse Mechanics' Vices.
- Prevents damage to workpieces with soft or polished surfaces.
- Supplied in pairs.



Part No.	Size	For use with	Pack Qty
EFG1	75mm (3")	EMV-1	10
EFG3	100mm (4")	EMV-3	10
EFG5	128mm (5")	EMV-5	10
EFG6	150mm (6")	EMV-6	10
EFG8	200mm (8")	EMV-8	10

EMV-JPS Spare Jaw plates

- Replacement hardened steel jaw plates with fine knurl grip pattern to fit EMV series vices.
- Supplied as a pair with 4 screws for easy fitting.



Part No.	Description
EMV-1JPS	Spare jaw plates and screws for EMV-1
EMV-3JPS	Spare jaw plates and screws for EMV-3
EMV-5JPS	Spare jaw plates and screws for EMV-5
EMV-6JPS	Spare jaw plates and screws for EMV-6
EMV-8JPS	Spare jaw plates and screws for EMV-8

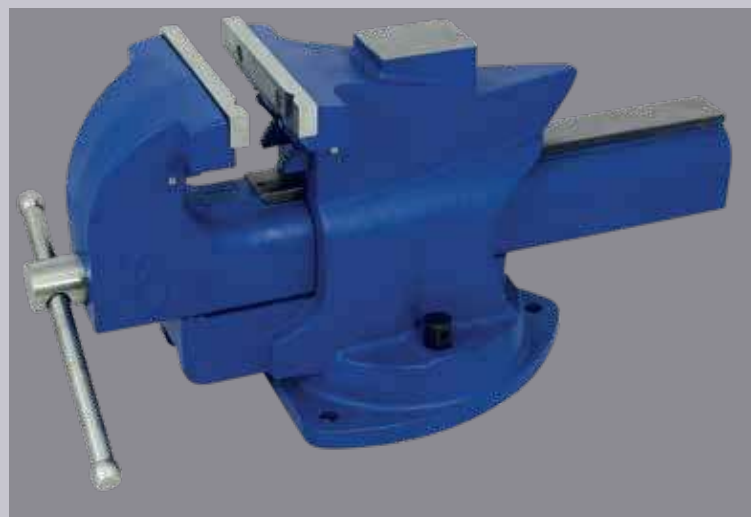
EQRV
Quick Release Mechanics' Vice

High quality specialist Cast Iron Mechanics' Vices with quick release features and multi-purpose vices for flexible working.

Strong and durable precision cast iron body with hardened steel jaw plates. Up to 4000kg of clamping force is achievable for medium to heavy duty metalworking and pipe jaws are included for specific pipe work.

It features an effortless quick release lever mechanism that ensures the vice can be opened and closed without using the main screw allowing rapid movement of the slide. This allows for workpieces to be quickly interchanged saving time in the workshop.

It includes a convenient anvil at the rear of the body for beating and hammering workpieces, 360° swivel rotation and a 3 lug heavy duty reinforced base. Available in 4" 5", 6" and 8" Jaw widths

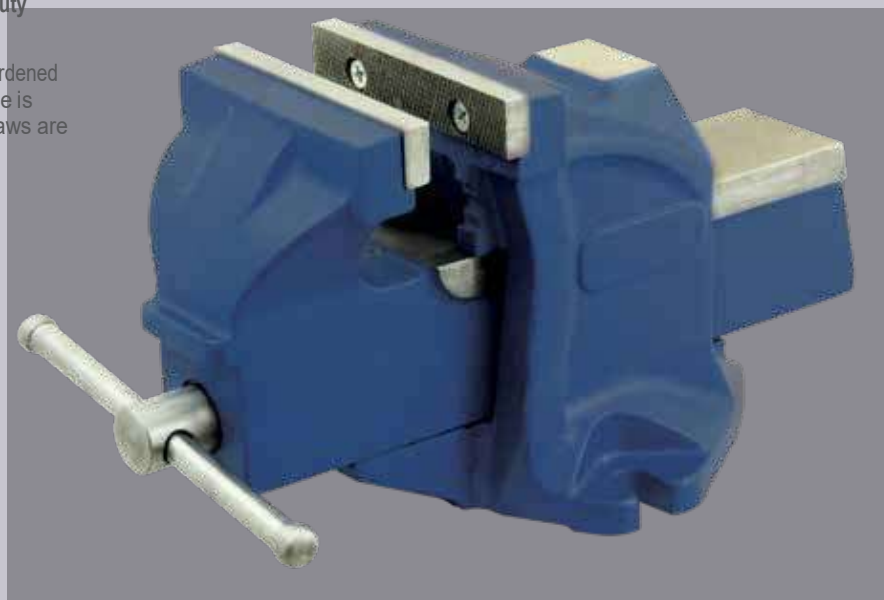


Part No.	Jaw Width	Throat Depth	Opening	Clamping Force (Max)	Net Weight	Qty per Pallet
EQRV-4"	100mm (4")	71mm	152mm	2000kgf	13.1kg	56
EQRV-5	125mm (5")	77mm	178mm	2500kgf	17.8kg	30
EQRV-6	150mm (6")	84mm	203mm	3000kgf	23.0kg	24
EQRV-8	200mm (8")	92mm	254mm	4000kgf	33.0kg	18

EHV-3
4" Pipe Jaw Workshop Vice

Compact Cast Iron workshop vice for medium duty working with built in pipe jaws.

Strong and durable precision cast iron body with hardened steel jaw plates. Up to 1000kg of clamping force is achievable for medium duty working and pipe jaws are included for specific pipe work



Part No.	Jaw Width	Throat Depth	Opening	Clamping Force (Max)	Net Weight	Qty per Pallet
EHV-3	100mm (4")	60mm	100mm	1000Kgf	7.6kg	105

EMPV-5
5" Multi-Purpose Vice

Strong and durable precision cast iron body with hardened steel jaw plates. Up to 3500kg of clamping force is achievable for medium to heavy duty metal and wood working and pipe jaws are included for specific pipe work.

The moving body is capable of rotating 360° and it also features a 360° swivel base for flexible working.

It includes a convenient anvil at the rear of the body for beating and hammering workpieces.



Part No.	Jaw Width	Throat Depth	Opening	Clamping Force (Max)	Net Weight	Qty per Pallet
EMPV-5	125mm (5")	67mm	125mm	3500kgf	15.0kg	40

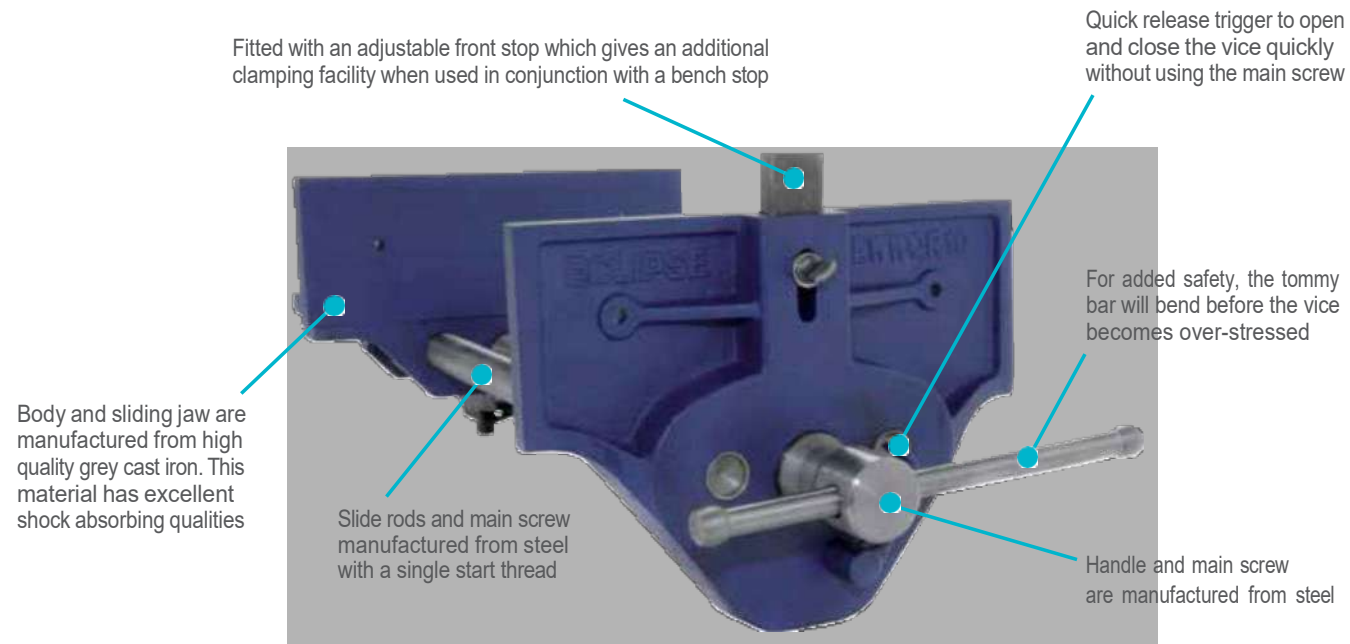
EBV-4
4" Bench Vice with 360° Swivel Base

- Body and sliding jaw manufactured from high quality cast iron to provide excellent shock absorption
- Tommy bar will bend before the vice becomes overstressed
- The slide is precision milled to a high tolerance for a fast, smooth operation
- Includes a 4 mount 360° Swivel Base



EWQQR Quick Release Woodworking Vices

High quality Cast Iron vices for general woodworking applications. Available in quick release and plain screw options. A portable version is available for flexible light duty applications.



EWQQR Quick Release Woodworking Vices

Part No.	Jaw Width	Throat Depth	Opening	Clamping Force (Max)	Net Weight	Qty per Pallet
EWQQR7	178mm (7")	90mm	202mm	1900Kgf	9.4kg	60
EWQQR9	230mm (9")	106mm	260mm	1900Kgf	15.5kg	32

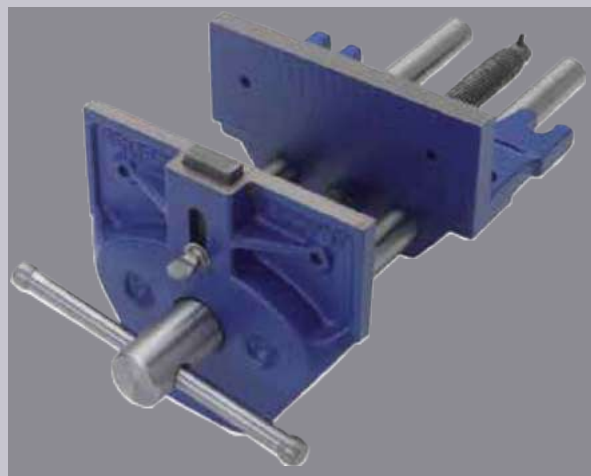
EWQPS Plain Screw Woodworking Vices

Plain screw mechanism works through a separate unbreakable nut housed beneath the body seating, to ensure the constant alignment of the screw mechanism.

Precision machined grey cast iron body and front to ensure a smooth, parallel action. Fitted with an adjustable front stop, or dog, that gives an additional clamping facility when used with a bench stop, to provide a normal vice and a tail vice in one tool.

To increase safety, the fused tommy bar will bend before the vice can become over-stressed.

Up to 1900Kgf clamping force is achievable and is ideal for holding large pieces of wood for cutting and gluing



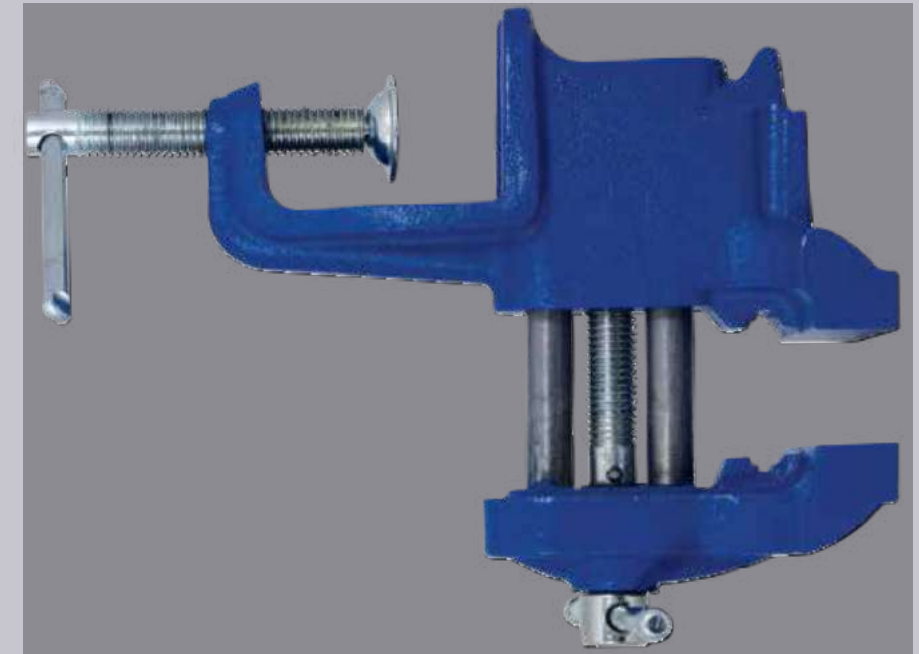
Part No.	Jaw Width	Throat Depth	Opening	Net Weight	Qty per Pallet
EWQPS7	178mm (7")	80mm	202mm	9.4kg	60
EWQPS9	230mm (9")	106mm	260mm	15.5kg	32

ETV-3 3" Table Vice

Portable vice for light duty workshop use. Up to 300kg of clamping force is achievable.

It includes permanent pipe jaws for specific pipe work and a small anvil for beating and hammering workpieces.

It features a built in clamp that allows easy fitting to a bench, table or work surface for flexible working.

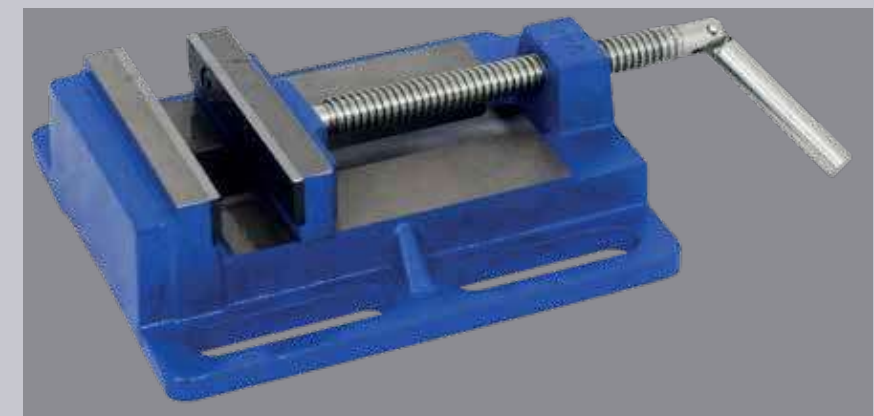


Part No.	Jaw Width	Throat Depth	Opening	Clamping Force (Max)	Net Weight	Qty per Pallet
ETV-3	75mm (3")	39mm	58mm	300kgf	1.66kg	360

EDPV-4 4" Drill Press Vice

Designed for use with drill presses and pillar drills, ideal for an engineering workshop or tool room.

Manufactured from high quality grey cast iron for strength and durability with a slotted base for easy installation and positioning.



Part No.	Jaw Width	Throat Depth	Opening	Clamping Force (Max)	Net Weight	Qty per Pallet
EDPV-4	100mm (4")	25mm (1")	110mm (4 1/4")	600kgf	3.2kg	240

Eclipse Clamps

Eclipse screw clamps are suitable for a wide range of medium and heavy duty wood and metal working applications. The Quick Release Lever Clamp series features a rapid clamping and releasing action.

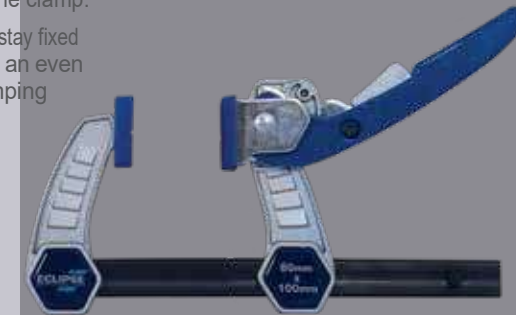


ELC80 and ELC120 Quick Release Lever Clamps 80mm and 120mm Throat Depth

Lightweight Aluminium frames and carbon steel bar are strong and durable and the clamps are capable of achieving up to 180kg of sustainable holding force and are ideal for gluing, positioning and fastening in wood working applications.

They feature a rapid clamping action with a quick release button that instantly releases the clamp.

The removable pads stay fixed to the clamp giving an even distribution of clamping force across the workpiece



Part No.	Clamping Capacity	Throat Depth	Pack Qty
ELC80-4	100mm (4")	80mm	10
ELC80-8	200mm (8")	80mm	10
ELC80-12	300mm (12")	80mm	10
ELC120-4*	100mm (4")	120mm	10
ELC120-8*	200mm (8")	120mm	10
ELC120-12	300mm (12")	120mm	10

EC-SC80 80mm throat depth Screw Clamps

80mm throat depth capacity clamps, manufactured to DIN5117 standard clamps with an average clamping force of 300kg (660lbs).

The sliding head quickly sets the clamp to the required capacity, whilst the serrated grooves on the corrosion resistant nickel plated bar prevent slippage in use. The cast iron malleable heads offer maximum strength and the wooden handle provides a firm and comfortable grip.



Part No.	Clamping Capacity	Pack Qty
EC-SC80R6	150mm (6")	10
EC-SC80R8	200mm (8")	10
EC-SC80R10	250mm (10")	10
EC-SC80R12	300mm (12")	10
EC-SC80R16	400mm (16")	10
EC-SC80R24	600mm (24")	6
EC-SC80R32	800mm (32")	6
EC-SC80R40*	1000mm (40")	1
EC-SC80R48*	1220mm (48")	1

* Made to Order. MOQ applies.
Details available on request for 32" 40" and 48"

EC-SCR 120mm throat depth Screw Clamps

DIN5117 standard clamps with an average clamping force of 300kg (660lbs)

The sliding head quickly sets the clamp to the required capacity, whilst the serrated grooves on the corrosion resistant nickel plated bar prevent slippage in use. The cast iron malleable heads offer maximum strength and the wooden handle provides a firm and comfortable grip. 120mm (4¾) throat depth.



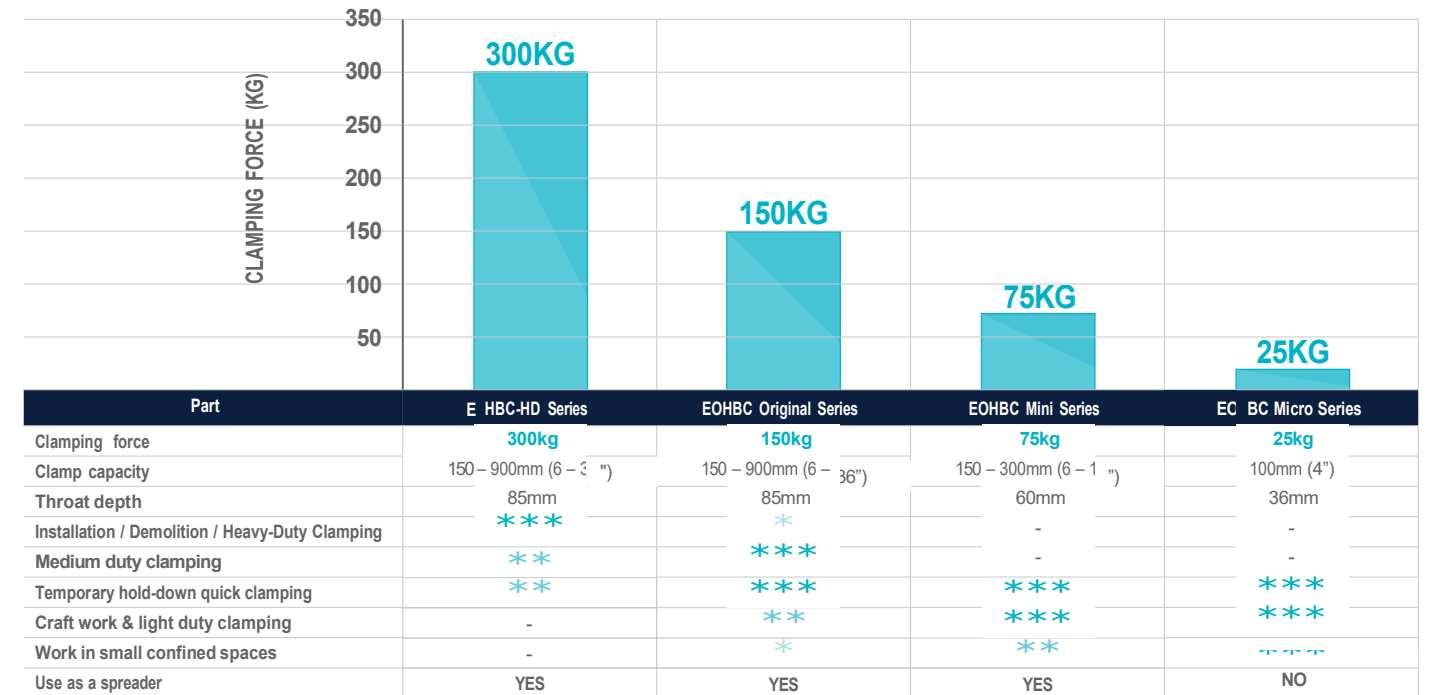
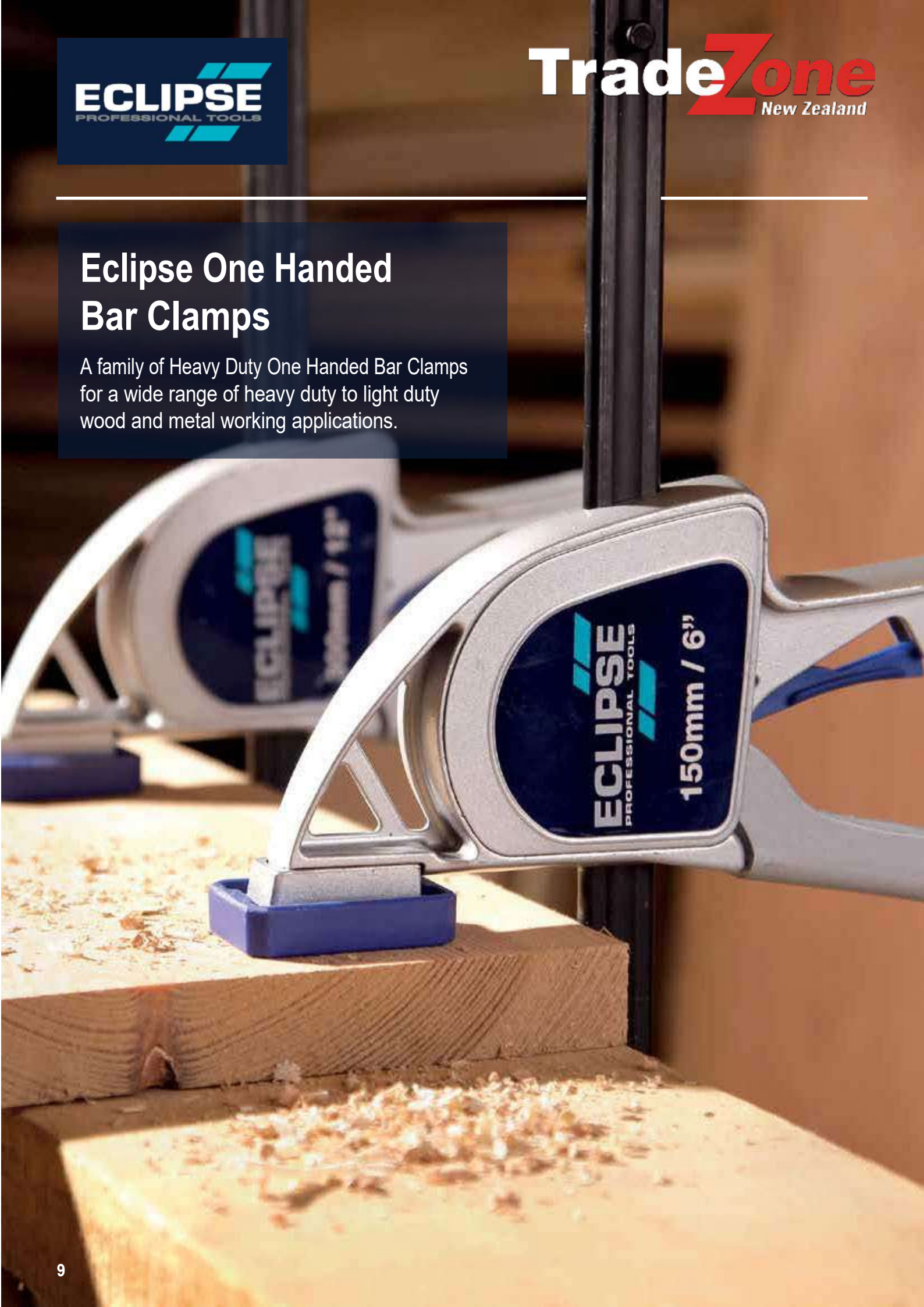
Part No.	Clamping Capacity	Pack Qty
EC-SCR6	150mm (6")	10
EC-SCR8	200mm (8")	10
EC-SCR10	250mm (10")	10
EC-SCR12	300mm (12")	10
EC-SCR16	400mm (16")	10
EC-SCR24	600mm (24")	6
EC-SCR32	800mm (32")	6
EC-SCR40	1000mm (40")	1
EC-SCR48*	1220mm (48")	1

* Made to Order. MOQ applies. Details available on request.

Heavy Duty OHB Clamps

Eclipse One Handed Bar Clamps

A family of Heavy Duty One Handed Bar Clamps for a wide range of heavy duty to light duty wood and metal working applications.



* GOOD / ** BETTER / *** BEST

EOHC-HD Heavy Duty One Handed Bar Clamps and Spreader

Lightweight Aluminium frames and carbon steel bar are strong and durable and the clamps are capable of achieving up to 300 kg of sustainable holding force and are ideal for heavy duty work holding applications.

The quick release insert trigger enables the clamp to be quickly positioned and released, whilst the easy push button system allows quick change from a clamp to a spreader.

The removable pads stay fixed to the clamp giving an even distribution of clamping force across the workpiece protecting it from marking damage.



Part No.	Clamping Capacity	Min Spreading Capacity	Max Spreading Capacity	Pack Qty
EOHC6-HD	150mm (6")	168mm (6 5/8")	355mm (13 7/8")	6
EOHC12-HD	300mm (12")	168mm (6 5/8")	507mm (19 7/8")	6
EOHC18-HD	450mm (18")	168mm (6 5/8")	660mm (25 7/8")	6
EOHC24-HD	600mm (24")	168mm (6 5/8")	813mm (32")	6
EOHC36-HD	900mm (36")	168mm (6 5/8")	1117mm (43 7/8")	6



EOHBC Original Series One Handed Bar Clamps and Spreaders

Average clamping force of 150kg. Quick release trigger enables the clamp to be quickly positioned and released, whilst the jaw release clip mechanism allows the jaw to be removed and re-attached to the other end of the bar, thus converting the clamp into a spreader.

The carbon steel bar and reinforced nylon body make it both tough and durable, whilst the ergonomically designed, soft feel pistol grip handle fits easily into the hand.

In addition, the toe-in feature means that, when fully closed, the jaws only meet at the top, thus providing an even clamping force across the whole depth of the workpiece. Non-marking pads firmly grip and protect the workpiece.



Part No.	Clamping Capacity	Min Spreading Capacity	Max Spreading Capacity	Pack Qty
EOHBC6	150mm (6")	168mm (6 5/8")	340mm (13 3/8")	20
EOHBC6X2*	150mm (6")	168mm (6 5/8")	340mm (13 3/8")	5
EOHBC12	300mm (12")	168mm (6 5/8")	495mm (19 1/2")	12
EOHBC18	450mm (18")	168mm (6 5/8")	645mm (25 3/8")	12
EOHBC24	600mm (24")	168mm (6 5/8")	800mm (31 1/2")	12
EOHBC36	900mm (36")	168mm (6 5/8")	1105mm (43 1/2")	12

* 150mm (6") in pairs in a display box

EOHBC-MINI and EOHBC - MICRO Mini and Micro One handed bar clamps

Strong plastic construction and carbon steel bar are strong and durable and allow the MINI clamp to achieve up to 75 kg and the MICRO clamp to achieve up to 25kg clamping force.

They are ideal for small wood working projects, working in confined spaces and delicate work requiring light pressure.

The MINI clamp features an easy push button system and allows a quick change from a clamp to a spreader.

The quick release insert trigger enables the clamps to be quickly positioned and released and the removable pads stay fixed to the clamp giving an even distribution of clamping force across the workpiece protecting it from marking damage.



Part No.	Clamping Capacity	Min Spreading Capacity	Max Spreading Capacity	Pack Qty
EOHBC6-MINI	150mm (6")	123mm(4 3/4")	275mm(10 3/4")	16
EOHBC12-MINI	300mm (12")	123mm(4 3/4")	427mm(16 3/4")	16
EOHBC4-MICRO	100mm (4")	N/A	N/A	20

Eclipse Heavy Duty Parallel Jaw Woodworking Clamps

Metal reinforced plastic housing for maximum strength capable of achieving up to 600Kgf of clamping force. An anti-slip system on the high quality extra strong 29 x 19mm profiled steel bar prevents the clamp from slipping in use. The large parallel clamping surface with protective pads ensures even distribution of force and protection of delicate workpieces and the clamp may be easily converted to a spreader without the need for other tools. An ergonomic handle ensures comfortable use. Available in six sizes: 12", 24", 32", 40", 50" and 60" clamping capacities and 95mm throat depth.



Part No.	Clamping Capacity	Minimum Spreading Capacity	Maximum Spreading Capacity
EC-PJC12	300mm (12")	300mm (12")	490mm (19 5/8")
EC-PJC24	600mm (24")	300mm (12")	790mm (31 5/8")
EC-PJC32	800mm (32")	300mm (12")	985mm (39 3/8")
EC-PJC40	1000mm (40")	300mm (12")	1200mm (48")
EC-PJC48	1200mm (48")	300mm (12")	1400mm (56")
EC-PJC60	1500mm (60")	300mm (12")	1680mm (67 1/8")

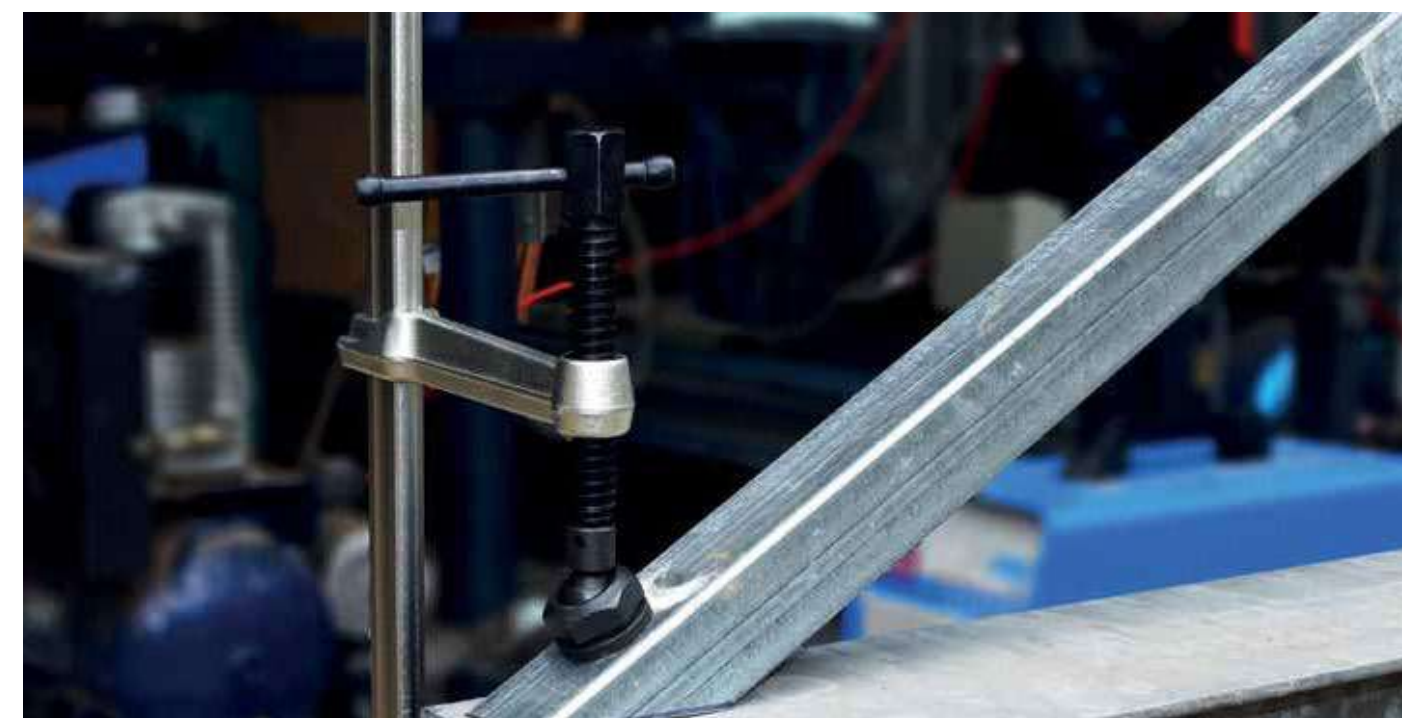


Eclipse Heavy Duty Metalworking Clamp

Heavy duty metal working clamps capable of up to 1200Kgf clamping force. High quality steel bar 30mm wide x 15mm thick ensures optimum strength. A hex design screw end reinforces clamping. The heat-treated circular pressure clamping plate features a full ball type support which may be tilted 35degrees to withstand heavy duty working and giving the ability to clamp awkward shaped work pieces. Available in five sizes: 10", 12", 16", 20" and 24" clamping capabilities and 140mm throat depth.



Part No.	Clamping Capacity	Pack Qty
EC-GS10	250mm (10")	5
EC-GS12	300mm (12")	5
EC-GS16	400mm (16")	5
EC-GS20	500mm (20")	5
EC-GS24	600mm (24")	5
EC-GSCP	Spare Clamping Pad	



ETBR T-Bar Clamps

Average clamping force of 1000kg (2200lbs)

The drilled feet in the fixed head enable the clamp to be mounted to a workbench. The ductile head and slide are guaranteed unbreakable, whilst the steel bar offers maximum tensile and yield strength. The slightly tapered jaws enable perfectly parallel clamping and the fast action rolled thread applies pressure quickly and smoothly to the workpiece.



Part No.	Clamping Capacity	Bar Length	Pack Qty
ETBR42	1070mm (42")	1220mm (48")	4
ETBR48	1220mm (48")	1370mm (54")	4
ETBR54	1370mm (54")	1525mm (60")	4
ETBR66	1680mm (66")	1830mm (72")	4
ETBR78	1980mm (78")	2135mm (84")	4
ETBR-TSPC*	Spare tail slide, peg and chain		1

* Made to Order. MOQ applies. Details available on request.

ESC Sash Clamps & Clamp Heads

Sash clamps have an average clamping force of 500kg (1100lbs). The ductile head and slide are guaranteed unbreakable, whilst the steel bar offers maximum tensile and yield strength. The slightly tapered jaws enable perfectly parallel clamping and the fast action rolled thread applies pressure quickly and smoothly to the workpiece.



Part No.	Clamping Capacity	Bar Length	Pack Qty
ESC24	600mm (24")	760mm (30")	6
ESC30	760mm (30")	915mm (36")	6
ESC36	915mm (36")	1070mm (42")	6
ESC42	1070mm (42")	1220mm (48")	6
ESC48	1220mm (48")	1370mm (54")	6
ESC54	1370mm (54")	1525mm (60")	6
ESC66	1680mm (66")	1830mm (72")	6
ESC-TSPC*	Spare tail slide, peg and chain		1

* Made to Order. MOQ applies. Details available on request.

E20 Heavy Duty G-Clamps

Average clamping force of 300 – 800kg (660 – 1760lbs). Guaranteed unbreakable malleable iron frame with a fast action twin start rolled acme thread. The steel swivel shoe applies an even pressure, even on angled surfaces, whilst the tommy bar will bend before the frame can become over-stressed.



Part No.	Clamping Capacity	Frame Proof Loads	Pack Qty
E20-3	75mm (3")	1000lbs (455kg)	6
E20-4	100mm (4")	1200lbs (545kg)	6
E20-6	150mm (6")	1400lbs (636kg)	6
E20-8	200mm (8")	1700lbs (773kg)	2
E20-10	250mm (10")	1700lbs (773kg)	2
E20-12	300mm (12")	2500lbs (1136kg)	2



Eclipse Gripping and Plumbing Tools

Wrenches and plumbing tools manufactured from the highest quality materials to the finest tolerances for optimum performance. A complete solution for the plumbing, installation and automotive industries.

A wide range of Pipe Wrenches to suit the majority of applications and user preferences.

ELPW - Leader Pattern Pipe Wrenches

The frame and handle are made from a one piece ductile iron casting which is guaranteed unbreakable, whilst the flash hardened teeth increase wear resistance. The hardened and tempered steel adjustment nut gives a longer working life and the precision machined screw thread and spring jaw remain open until pressure is applied. Conforms to British Standard BS3594.



Size	Open Length	Pipe Capacity	Box Qty.
ELPW8	200mm (8")	25mm (1")	4
ELPW10	250mm (10")	38mm (1½")	4
ELPW12	300mm (12")	51mm (2")	4
ELPW14	350mm (14")	51mm (2")	4
ELPW18	450mm (18")	63mm (2½")	4
ELPW24	600mm (24")	76mm (3")	1
ELPW36	910mm (36")	127mm (5")	1
ELPW48	1200mm (48")	152mm (6")	1

ESPW - Stillson Pipe Wrenches

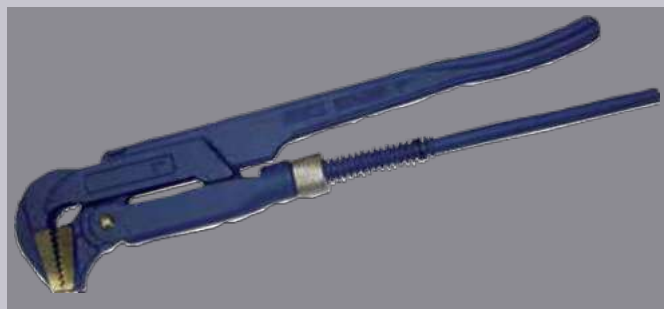
The hardened and tempered hook jaw eliminates breakage, whilst the flash hardened teeth increase wear resistance. The nut abutment means that all loading is transferred direct from the handle to the nut and jaw via the nut abutment, ensuring that the frame is not load bearing, thus reducing the possibility of frame failure. Conforms to British Standard BS3594.



Size	Open Length	Pipe Capacity	Box Qty.
ESPW8	200mm (8")	19mm (¾")	6
ESPW10	250mm (10")	25mm (1")	6
ESPW12	300mm (12")	32mm (1¼")	6
ESPW14	350mm (14")	38mm (1½")	6
ESPW18	450mm (18")	51mm (2")	4
ESPW24	600mm (24")	63mm (2½")	4
ESPW36	910mm (36")	89mm (3½")	2

ESWDPW - Swedish Pattern Pipe Wrenches

Bent nose 90 degree angled head. Manufactured from drop forged, hardened chrome vanadium steel. Hardened jaws.



Size	Open Length	Pipe Capacity	Box Qty.
ESWDPW1	355mm (13⅞")	25mm (1")	6
ESWDPW15	470mm (18½")	38mm (1½")	6
ESWDPW2	610mm (24")	50mm (2")	4
ESWDPW3	695mm (27⅞")	75mm (3")	1

EQAPW12 - 12" Quick Adjustment Pipe Wrench

This latest addition to the Eclipse range of Wrenches, is designed to offer the convenience of a traditional pipe wrench with the added benefit of quick and easy one-handed adjustment, in a compact size suitable for use in more confined spaces.

- Cast Aluminium Slide and Handle with Forged Carbon Steel Head
- Compact size 300mm/12"
- Hardened teeth
- Deep-grooved jaws for instant grip and a firm ratcheting action
- For use with copper and aluminium pipes as well as ferrous and non-ferrous metals



Part No.	Open Length	Pipe Capacity	Box Qty.
EQAPW12	300mm (12")	45mm (1¾")	6

A choice of Adjustable Wrenches for a variety of applications, manufactured to the highest standards and quality.

SFADJW3PS - 3 Piece Soft Feel Adjustable Wrench Set

- 6", 8" and 10" wrenches
- Chrome Vanadium steel
- Rust resistant lacquer for increased durability
- Ergonomic soft feel sleeve for maximum comfort and grip
- Metric scale laser etchings for fast, accurate setting



ADJW Adjustable Wrenches - Professional

Specially designed for the Professional user. Ideal for use in plumbing, installation and automotive industries. Exceptionally quick adjusting screw to move the scaling jaw. Left handed screw thread and super thin head with wide jaw opening to allow use in confined spaces.



Size	Length	Jaw Width	Pack Qty.
ADJW6L	150mm (6")	24mm	6
ADJW8L	200mm (8")	28mm	6
ADJW10L	250mm (10")	33mm	6
ADJW12L	300mm (12")	38mm	6
ADJW18L	450mm (18")	60mm	1
ADJW24L	600mm (24")	70mm	1
ADJW24L	600mm (24")	70mm	1

ADJW - Adjustable Wrenches - Extra Wide Jaws

Ideal for use in plumbing, installation and automotive tasks. Not only does the extra wide jaw opening increase versatility, but the super thin head means that the wrench can be used in confined spaces. In addition, the throat depth is deeper than standard adjustable wrenches and the head is angled to offer maximum speed and efficiency. Soft grip handle for added comfort.

Size	Length	Jaw Width	Pack Qty.
ADJW6WJ	150mm (8")	34mm (1.3")	6
ADJW8WJ	200mm (8")	38mm (1½")	6
ADJW10WJ	250mm (10")	50mm (2")	5
ADJW12WJ	300mm (12")	60mm (2¼")	5

ADJW - Adjustable Wrenches - Soft Feel Handle

The wide jaw can be used to tighten large nuts and bolts, whilst the metric scale laser etched onto the jaw ensures fast setting of the tool. The rust resistant lacquer increases the product life and the ergonomic soft feel sleeve gives maximum comfort and grip.



Size	Length	Jaw Width	Pack Qty.
ADJW6	150mm (8")	27mm (1")	5
ADJW8	200mm (8")	33mm (1¼")	5
ADJW10	250mm (10")	38mm (1½")	5
ADJW12	300mm (12")	45mm (1¾")	5

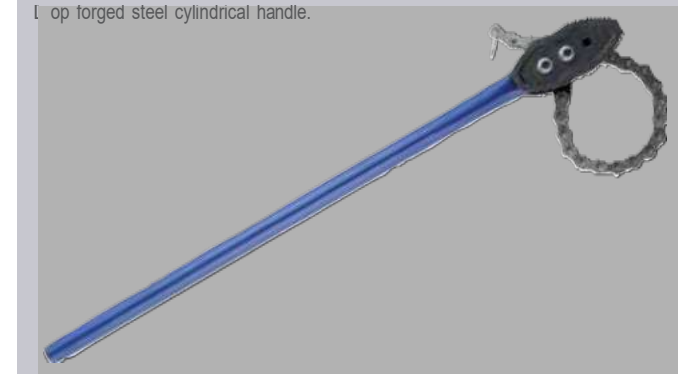
ECPW - Chain Pipe Wrenches

An adjustable pipe wrench that turns a pipe in either direction. Ideal for use on round, square, or irregular shapes in confined spaces, eg when a pipe is in a trench or against a wall.

Drop forged steel jaws are both hardened and tempered for maximum strength.

The tensile steel chain loops quickly around the pipe and, once locked, holds it in place to prevent slippage. Only the teeth on the face of the handle bite into the pipe, meaning that, when these become worn, the jaws can be reversed to double the life of the tool.

Drop forged steel cylindrical handle.



Part No.	Size	Capacity	Chain Length	Pack Qty.
ECPW4	100mm (4")	12-100mm (½ - 4")	730mm (28.7")	2
ECPW8	200mm (8")	25-200mm (1-8")	1015mm (39.9")	2
ECPW12	300mm (12")	50-300mm (2 - 12")	1340mm (52.7")	2

Wrenches, Pipe Vices and Cutters

Pipe Slicers and tube cutters for plastic, copper, brass, aluminium and mild steel. Pipe Vice for repetitive clamping tasks.

ADJW Adjustable Wrenches - Standard Handle

Can be used to tighten large nuts and bolts, whilst the metric scale laser etched onto the jaw ensures fast setting of the tool. The rust resistant lacquer increases the product life. Features a ring spanner in handle*, ideal for use in difficult to reach areas.

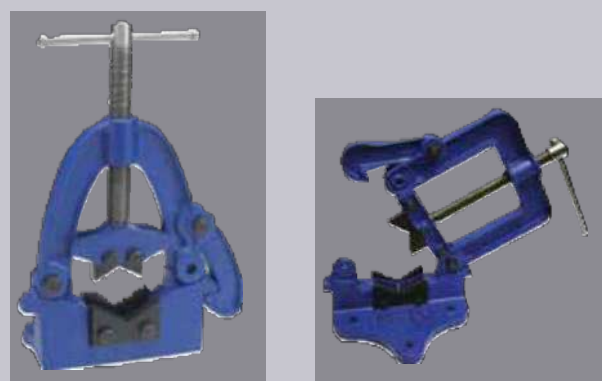


Size	Length	Jaw Width	Ring Spanner Size	Pack Qty.
ADJW6S	150mm (6")	27mm (1 1/16")	10mm (3/8")	5
ADJW8S	200mm (8")	33mm (1 7/16")	11mm (7/16")	5
ADJW10S	250mm (10")	38mm (1 1/2")	13mm (1/2")	5
ADJW12S	300mm (12")	45mm (1 3/4")	14mm (9/16")	5
ADJW15S	375mm (15")	49mm (2")	Not Included	2

*ring spanner not included on ADJW15S

EHPV - Hinged Pipe Vices

Ideal for repetitive clamping tasks on pipework. Can be fitted to a bench or a stand. The hinged top section allows rapid access to the job, whilst the self locking frame is reversible for right or left-handed operation. The steel tommy bar and main screw exert and maintain a powerful gripping force and the SG ductile iron frame is guaranteed unbreakable.



Part No.	Open Length	Box Qty.
EHPV2	10-50mm (3/8" - 2")	4
EHPV2-1/2	10-60mm (3/8" - 2 1/2")	4
EHPV3-1/2	10-90mm (3/8" - 3 1/2")	2
EHPV6	16-150mm (5/8" - 6")	1

EABW300 - Adjustable Basin Wrench - 300mm (12")

Designed to offer the convenience of a traditional pipe wrench with the added benefit of quick and easy one-handed adjustment, in a compact size suitable for use in more confined spaces.

- Cast Aluminium slide and handle with Forged Carbon Steel Head
- Compact size 300mm/12"
- Hardened teeth
- Deep-grooved jaws for instant grip and a firm ratcheting action
- For use with copper and aluminium pipes as well as ferrous and non-ferrous metals



NEW

Part No.	Pipe Capacity	Box Qty.
EABW300	32mm (1 1/4")	5

ECTC22 - Mini Tube Cutter

For cutting 3-22mm (1/8" to 7/8" o.d.) copper and aluminium tubing. Specifically suited to small bore tubing. The compact size makes the mini tube cutter ideal for use in confined spaces. Quickly adjusts to the required cutting position.



Part No.	Cutting Capacity	Box Qty.
ECTC22	3-22mm (1/8" - 7/8")	10

ECTC - Telescopic Tube Cutters

For cutting copper, brass, aluminium and light gauge steel tube. Makes clean, fast cuts, leaving little flash to clear away. The feed screw does not expand during use, so telescopic tube cutters are ideal for use in confined spaces. Each cutter includes an integral deburrer and a spare cutting wheel.



Part No.	Cutting Capacity	Box Qty.
ECTC32	3-32mm (1/8" - 1 1/4")	5
ECTC50	5-50mm (3/16" - 2")	5

Pipe Benders and Cutters

Cutters for plastic, steel and cast iron. A hand bender for site bending copper tube.

EPPC - Plastic Pipe Cutters

Ensure clean cuts without distortion to the plastic tubing. For cutting PVC, polythene, MDP and polyethylene pipe, HEP 20, plastic overflow pipe and rubber hoses.

- High quality stainless steel blades
- Ratchet system ensures a fast, efficient cut
- Two sizes available; 32mm and 42mm



Part No.	Cutting Capacity	Box Qty.
EPPC32	32mm (1 1/4")	10
EPPC42	42mm (1 5/8")	10

ECPS - Copper Pipe Slicers

For cutting copper tubing. Single handed operation - ideal for use in confined areas, for example where there is limited space between the wall and copper pipes. Two sizes available for use with 15mm and 22mm copper tube.



Part No.	Cutting Capacity	Box Qty.
ECPS15	15mm (1/2")	10
ECPS22	22mm (7/8")	10

EHB6810 - Mini Pipe Bender

Compact tool suitable for bending 6,8 and 10mm copper pipe, aluminium, brass and other non ferrous metal tubing.

- Manufactured from carbon steel for strength and durability
- Features a calibration scale for easy accurate bending or right, left and offset bends up to 180°
- Ideal for plumbers and engineers installing central heating, air conditioning, refrigeration and other general installation jobs



Part No.	Pipe Capacity	Box Qty.
EHB6810	6mm (1/32"), 8mm (5/16") and 10mm (3/8")	10

EHB - Hand Bender & Accessories

A compact tool for bending 15mm and 22mm o.d. copper tube. Ideal for on site operation. Supplied with 15mm and 22mm formers and guides.

Part No.	Pipe Capacity	Box Qty.
EHB1522	15-22mm (9/16" - 7/8")	1
EHBG15	15mm Guide	24
EHBG22	22mm Guide	4
EHBF15	15mm Former	10
EHBF22	22mm Former	10

9350 - Deburring Tool

A multifunctional tool capable of holding a range of different blades, coarse to fine, for external and internal deburring operations. Easy to operate chuck allows for quick blade changeover.



DB1/DB2 Blades

DB1 - Heavy Duty HSS blade for steel and aluminium.
DB2 - Heavy Duty HSS blade for brass and cast iron.

- Capable of right and left hand cuts.
- All blades are ground from quality high speed steel, heat treated for maximum tool life and designed for safety with unique rounded heads.

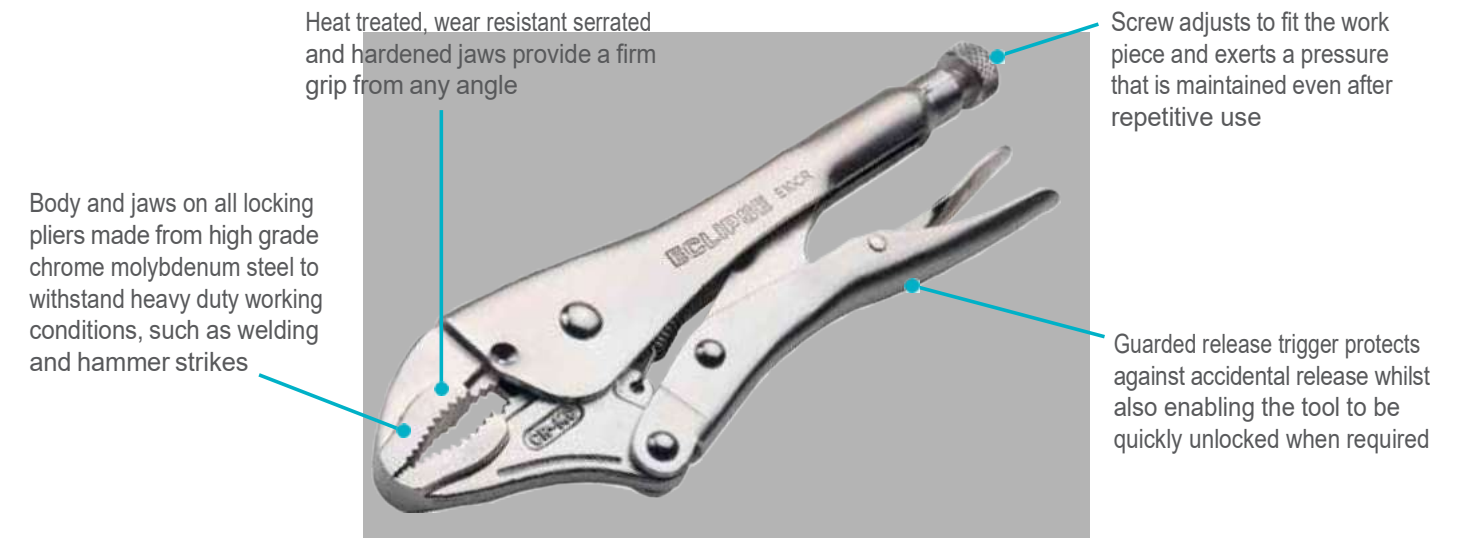


Locking Jaw Pliers and C-Clamps

A range of top quality Locking Pliers and locking C-Clamps for the professional user.



Locking Jaw Pliers and C-Clamps



Locking Pliers - Typical Applications

Part No.	HVAC	Welding	Plumbing	Automotive	Electrical	Woodworking
E7R E10R	Clamping / Crimping	Clamping flat, square & hex surfaces	Non slip pipe wrench, portable vice, twisting wire	Clamping, removing bolts	Portable vice, twisting wire	Portable vice, pulling out nails
E10CR	Clamping / Crimping	Clamping round surfaces	Non slip pipe wrench, portable vice, twisting wire	Clamping, removing bolts	Portable vice, screwdriver lever	Portable vice, pulling out nails
E5WR E7WR E10WR	Clamping / Crimping / Wire Cutting	Clamping round surfaces	Non slip pipe wrench, portable vice, cutting & twisting wire	Clamping, removing bolts	Portable vice, screwdriver lever, cutting & twisting wire	Portable vice, pulling out nails, cutting wire
E6LN	Clamping/Crimping/Wire Cutting	Clamping in difficult to reach spaces	Repairing faucets	Removing brake springs & clips, general clamping	Bending & cutting wire	Pulling nails & staples
E6SP E11SP	Clamping welding supports	Clamping welding supports	Temporary pipe hanger	Sheet metal repair work	—	Clamping long reach, delicate work pieces
E6R E11R	Clamping welding supports	Clamping welding supports	Temporary pipe hanger	Sheet metal repair work	—	Clamping long reach work pieces
E20R	Removing components, holding awkward shapes	Removing components, holding awkward shapes	Holding awkward shapes	Removing components, holding awkward shapes	—	—
E9R	—	Accurately aligning round & square shaped tubing	—	—	—	—
E8R	—	Holding sheet metal during bending, forming & crimping	—	—	—	—

Locking Jaw Pliers

A wide choice of Locking Pliers for different applications in a range of sizes.

Straight Jaw Locking Pliers

Designed for use with flat, square and hex workpieces. Ideal for welding, HVAC, plumbing, automotive, electrical and woodworking projects.



Part No.	Size	Max Jaw Capacity	Box Qty.
E7R	175mm (7")	34mm (1 ⁵ / ₁₆ ")	5
E10R	250mm (10")	45mm (1 ³ / ₄ ")	5

Curved Jaw Locking Pliers

Designed for gripping and clamping round surfaces.



Part No.	Size	Max Jaw Capacity	Box Qty.
E10CR	250mm (10")	45mm (1 ³ / ₄ ")	5

Curved Jaw Locking Pliers with Wire Cutters

Designed for gripping and clamping round surfaces. Incorporates a wire cutter.



Part No.	Size	Max Jaw Capacity	Box Qty.
E5WR	125mm (5")	32mm (1 ¹ / ₄ ")	5
E7WR	175mm (7")	34mm (1 ⁵ / ₁₆ ")	5
E10WR	250mm (10")	45mm (1 ³ / ₄ ")	5

Long Nose Locking Pliers With Wire Cutters

Particularly suited for clamping and tightening bolts in confined spaces. Also ideal for precision work. Incorporates a wire cutter.



Part No.	Size	Max Jaw Capacity	Box Qty.
E6LN	150mm (6")	51mm (2")	5

11" Locking Table C-Clamp

Ideal for clamping and workpieces when drilling, milling, welding and gluing.

- Suitable for fixing on machinery T Slots, tables and workbenches
- Swivel jaw pads minimise marking of delicate workpieces
- Chrome Molybdenum steel body and handles for strength and durability
- Guarded release trigger protects against accidental release
- Screw adjusts to fit work piece giving an even pressure



Part No.	Size	Max Jaw Capacity	Box Qty.
E-11TSC	275mm (11")	92mm (3 ⁵ / ₈ ")	5

Locking C-Clamps with Regular Tips

The wide opening jaws are designed to reach around and grip awkward shapes. Provide a deep reach.



Part No.	Size	Max Jaw Capacity	Box Qty.
E6R	150mm (6")	44mm (1 ³ / ₄ ")	5
E11R	275mm (11")	80mm (3 ¹ / ₈ ")	5

Locking C-Clamps with Swivel Pads

The wide opening jaws are designed to reach around and grip awkward shapes whilst the swivel pad protect delicate workpieces from damage. Provides a deep reach.



Part No.	Size	Max Jaw Capacity	Box Qty.
E6SP	150mm (6")	44mm (1 ³ / ₄ ")	5
E11SP	275mm (11")	80mm (3 ¹ / ₈ ")	5

Locking Welding Clamp

U-shaped jaws accurately align round and square shaped tubing when welding.



Part No.	Max Capacity	Box Qty.
E9R	44mm (1 ³ / ₄ ")	5

Locking Chain Clamp

Grips and holds awkward shapes up to 18"/455mm in diameter. Ideal for working with pipes in confined spaces, eg. up against a wall.

Part No.	Chain Size	Box Qty.
E20R	455mm (18")	5

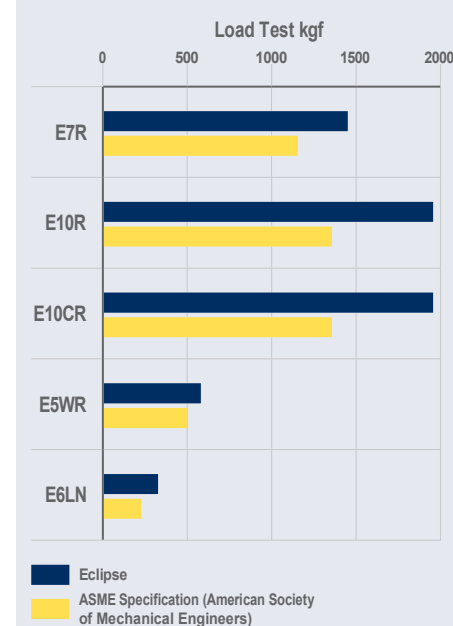
E8R Locking Sheet Metal Tool

Grips and locks onto sheet metal when bending, forming and crimping.



Part No.	Size	Max Capacity	Box Qty.
E8R	200mm (8")	12.7mm (1/2")	5

Load Test: ASME Test Specification



Eclipse locking pliers exceed ASME load test specifications.



ECLIPSE

PROFESSIONAL TOOLS

TradeZone
New Zealand



FIND OUT MORE AT

Web. www.tradezone.co.nz

Email: hub@tradezone.co.nz

Ph. 09 274 5509